

SCA A2 | AISI304

A2
AISI 304

COUNTERSUNK SCREW

COST/PERFORMANCE

Simple geometry, optimised to provide good performance at a low cost.

SMOOTH UNDER-HEAD

Ideal for fastening stainless steel clips and hinges thanks to the smooth, countersunk head.

SIMPLE BOX

Packaging optimised to reduce material wastes in the building site.
Increased number of pieces for package.



CHARACTERISTICS

FOCUS	use with stainless steel clips
HEAD	countersunk without ribs
DIAMETER	from 3,5 to 5,0 mm
LENGTH	from 25 to 70 mm



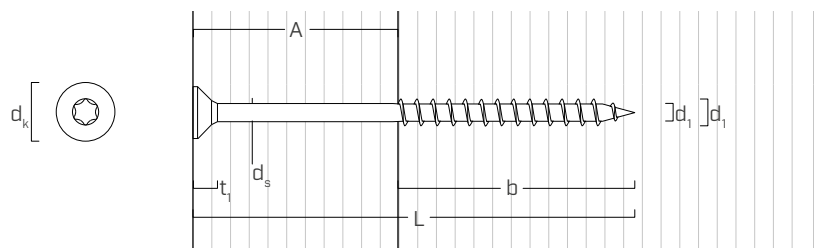
MATERIAL

A2 | AISI304 austenitic stainless steel.

FIELDS OF USE

Use in aggressive outdoor environments. Wooden boards with density of $< 470 \text{ kg/m}^3$ (without pre-drill) and $< 570 \text{ kg/m}^3$ (with pre-drill). Suitable for service classes 1-2-3.

■ GEOMETRY



Nominal diameter	d_1	[mm]	3,5	4	4,5	5
Head diameter	d_k	[mm]	6,80	8,00	9,00	10,00
Tip diameter	d_2	[mm]	2,25	2,55	2,80	3,40
Shank diameter	d_s	[mm]	2,50	2,75	3,15	3,65
Head thickness	t_1	[mm]	3,50	3,80	4,25	4,65
Pre-drilling hole diameter	d_v	[mm]	2,0	2,5	3,0	3,0

■ CODES AND DIMENSIONS

d_1	CODE	L	b	A	pcs
[mm]		[mm]	[mm]	[mm]	
3,5	SCA3525	25	18	7	500
TX 10	SCA3535	35	24	11	500
4	SCA440	40	24	16	200
TX 20	SCA450	50	30	20	200

d_1	CODE	L	b	A	pcs
[mm]		[mm]	[mm]	[mm]	
4,5	SCA4550	50	30	20	200
TX 20	SCA4560	60	36	24	200
5	SCA550	50	30	20	200
TX 25	SCA560	60	36	24	200
	SCA570	70	42	28	200



GAP

Ideal for fastening standard Rothoblaas clips in outdoor environments.